

Sheet1  
alimentation

VPA\_EN

Sheet2  
user\_interfaceLCD\_SCK  
LCD\_MOSI  
LCD\_MISO  
LCD\_LCD\_nCS  
LCD\_SD\_nCS  
LCD\_D/nC  
LCD\_nRESET  
LCD\_BLSheet3  
microcontrollerFC6\_SCK  
FC6\_MOSI  
FC6\_MISO  
FC6\_SSEL1  
LCD\_SD\_nCS  
LCD\_D/nC  
LCD\_nRESET  
LCD\_BL

GPIO\_PIO1\_12

FC1\_SCK  
FC1\_MOSI  
FC1\_MISO  
FC1\_SSEL0GPIO\_PIO0\_1  
INT0ADC0\_CH4  
ADC0\_CH3

GPIO\_PIO1\_9

nBTN1\_OUT  
nBTN2\_OUT  
  
FT230\_TXD  
FT230\_RXD  
FT230\_nRTS  
FT230\_nCTSPINT1  
PINT2  
  
FC3\_TXD  
FC3\_RXD  
FC3\_nRTS  
FC3\_nCTS

ADC0\_CH8

FC7\_SSEL1  
FC7\_SSEL2  
FC7\_SSEL3  
FC7\_SCK  
FC7\_MOSIGPIO\_PIO0\_25  
GPIO\_PIO0\_26Sheet4  
rf\_interfacerfid\_reader\_SCK  
rfid\_reader\_MOSI  
rfid\_reader\_MISO  
rfid\_reader\_nCSrfid\_reader\_EN  
rfid\_reader\_IRQrfid\_reader\_OAD  
rfid\_reader\_OAD2

rfid\_reader\_CLSYS

RF\_OUT\_20dbm  
RF\_OUT\_0dbmRX\_P  
RX\_N

rfid\_reader\_ADC

Sheet5  
ext\_power\_amplifierRF\_20dbm  
RF\_0dbmPA\_SWITCH\_EXT\_AMP\_OUTPUT  
PA\_SWITCH\_20dbm\_FIXED\_OUTPUT

LP\_FILTER\_OUT

Sheet6  
couplingRX\_P  
RX\_N

DIR\_COUPLER\_INPUT

RF\_DETECTOR

DTC1\_EN  
DTC2\_EN  
DTC3\_EN  
DTC\_SCK  
DTC\_MOSIFD1  
FID1X2RFD2  
FID1X2RFD3  
FID1X2RPTH1  
GNDPTH2  
GNDPTH3  
GNDPTH4  
GNDTitle **RFID UHF READER**

Size: A4

Number:\*

Revision:2,0

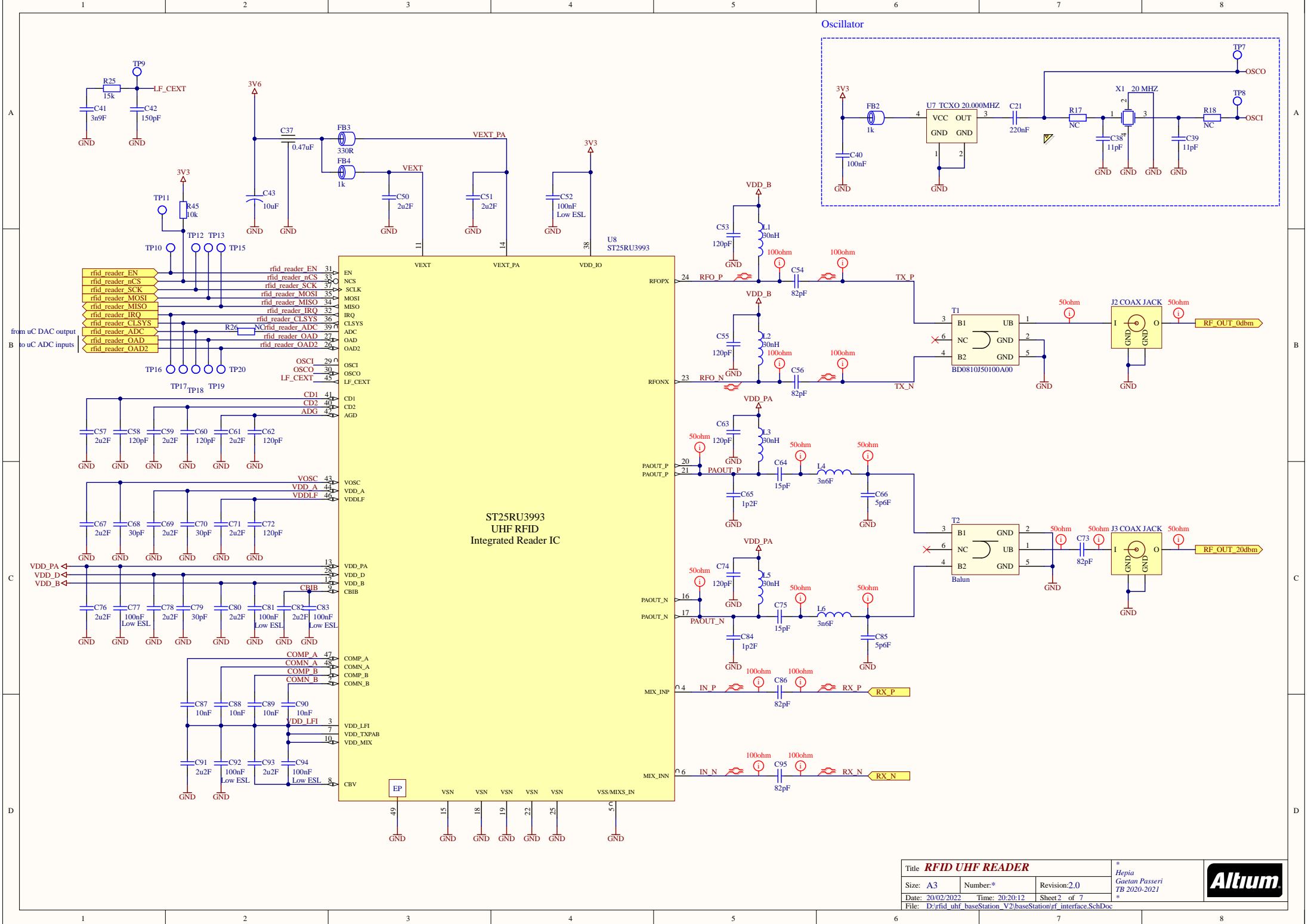
Date: 20/02/2022

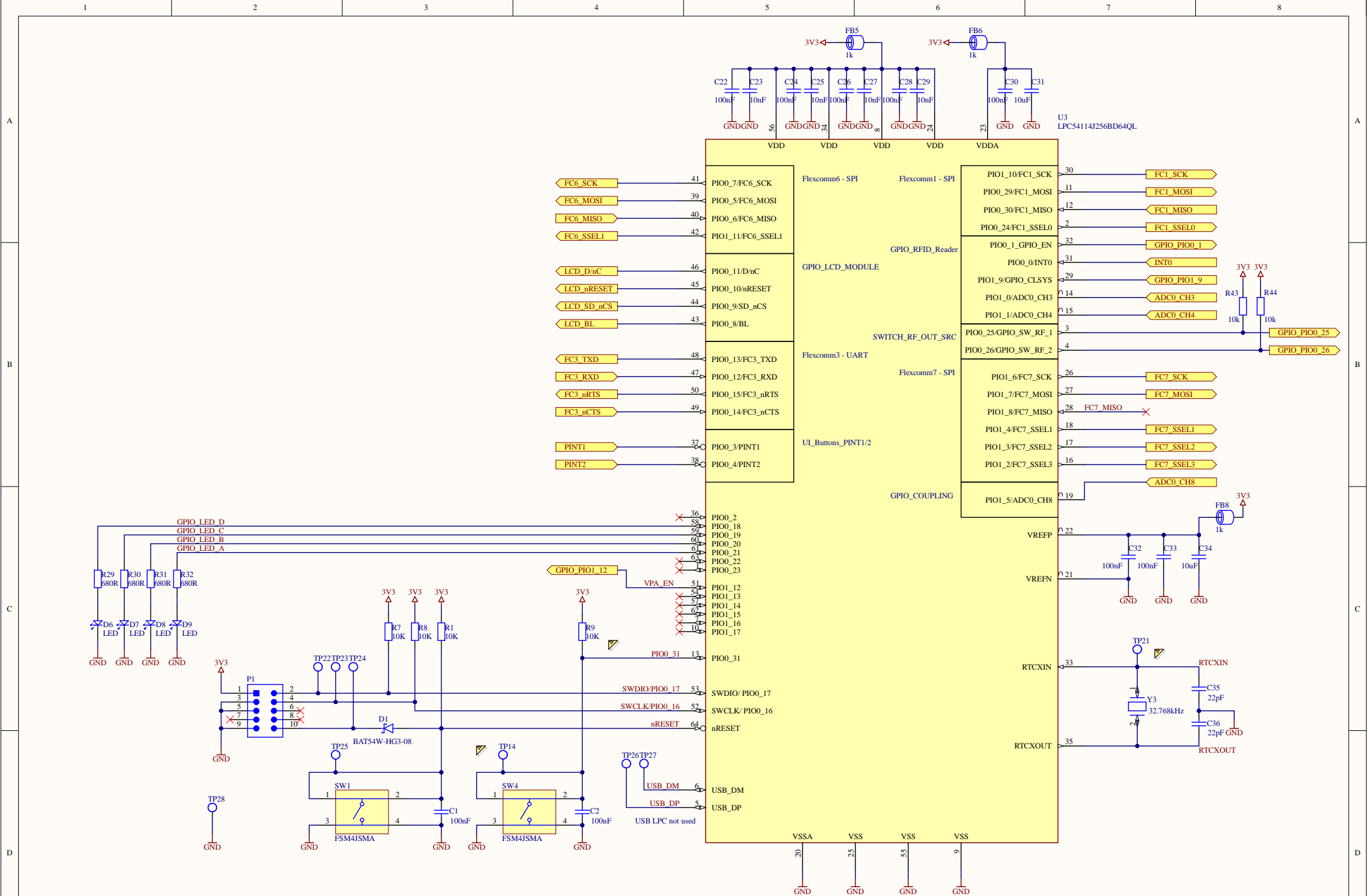
Time: 20:20:12

Sheet 1 of 7

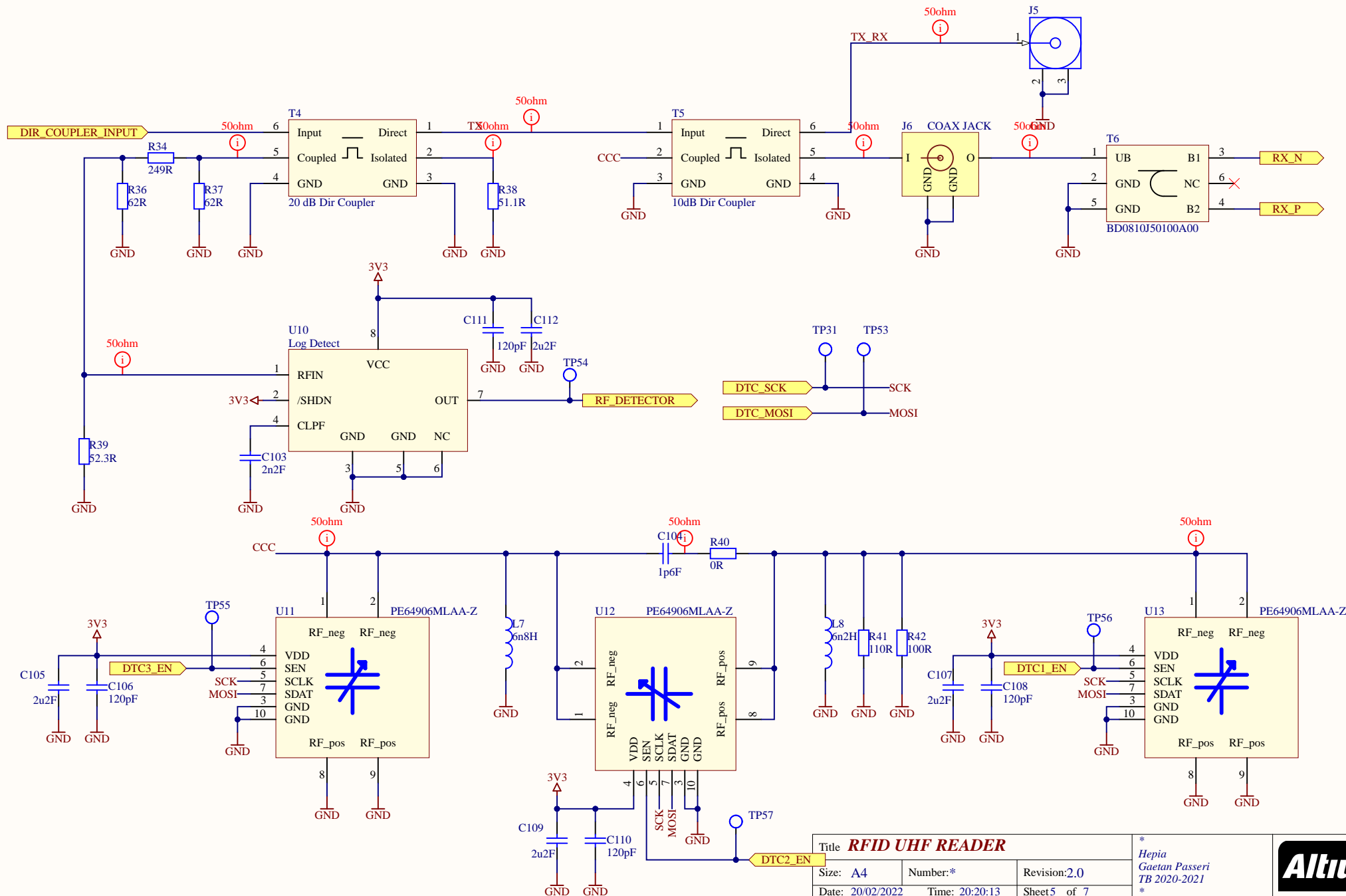
File: D:\rfid\_uhf\_baseStation\_V2\baseStation\baseStation.SchDoc

\*  
Hepia  
Gaetan Passeri  
TB 2020-2021  
\***Altium**









Title <b>RFID UHF READER</b>		
Size: <b>A4</b>	Number:*	Revision:2.0
Date: 20/02/2022	Time: 20:20:13	Sheet5 of 7
File: D:\rfid_uhf_baseStation_V2\baseStation\coupling.SchDoc		

\*  
Hepia  
Gaetan Passeri  
TB 2020-2021  
\*





