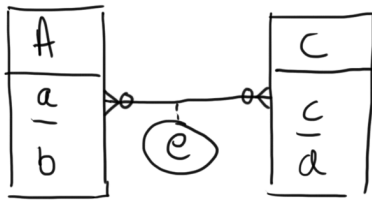
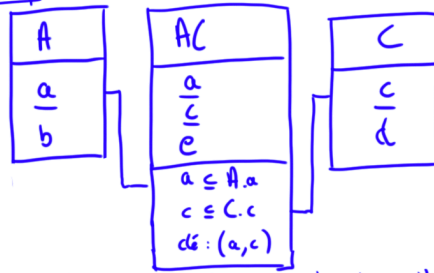


Modèle EA

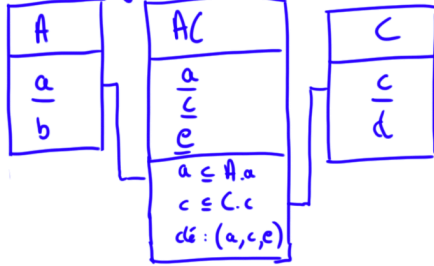


Modèle relationnel - diagramme

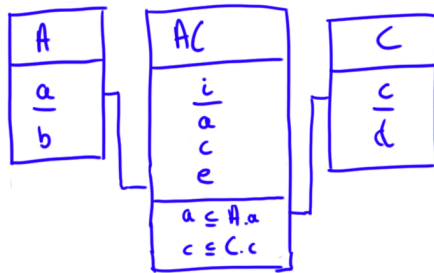
strict



moins strict : ajout d'attributs pertinents de l'association



faux : introduction d'une clé artificielle



Modèle relationnel - schéma

$A(\underline{a}, b)$
 $C(\underline{c}, d)$
 $AC(\underline{a, c}, e)$
 $a \subseteq A.a$
 $c \subseteq C.c$

$A(\underline{a}, b)$
 $C(\underline{c}, d)$
 $AC(\underline{a, c, e})$
 $a \subseteq A.a$
 $c \subseteq C.c$

$A(\underline{a}, b)$
 $C(\underline{c}, d)$
 $AC(\underline{i}, a, c, e)$
 $a \subseteq A.a$
 $c \subseteq C.c$